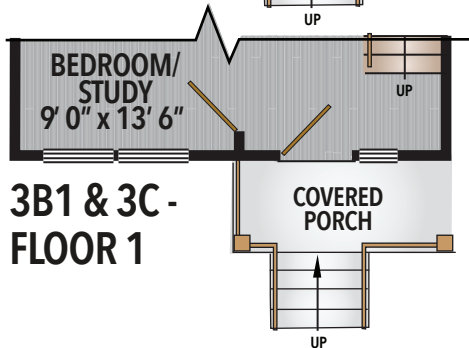
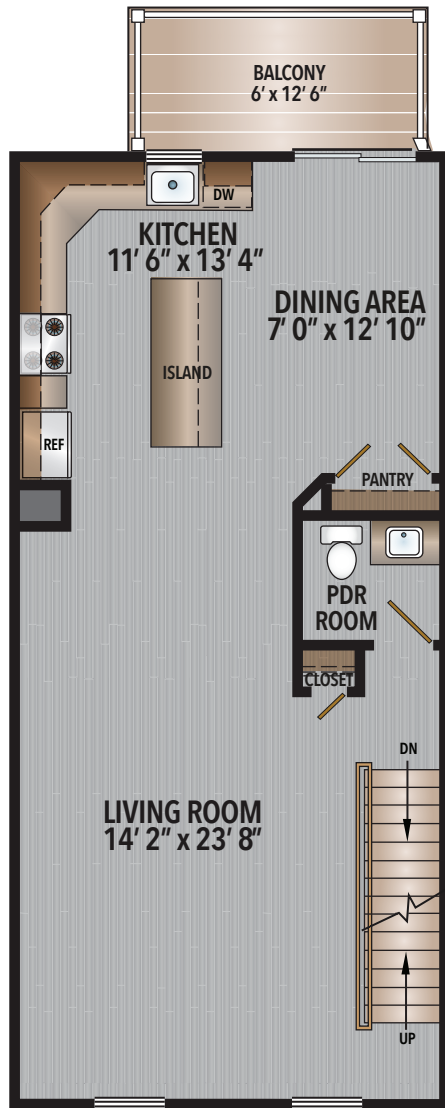




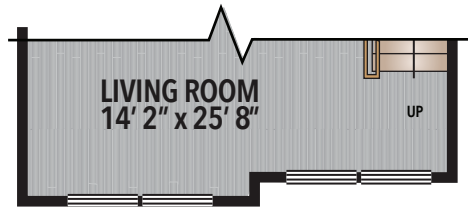
3B FLOOR 1



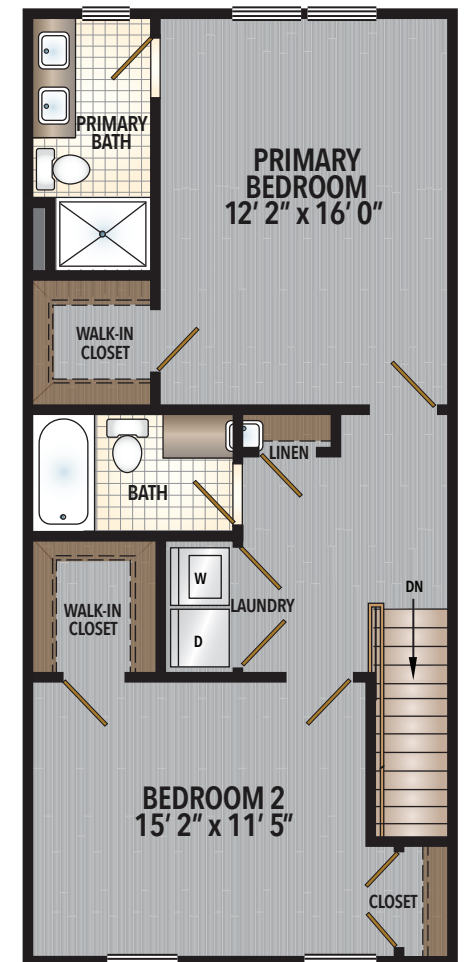
3B1 & 3C - FLOOR 1



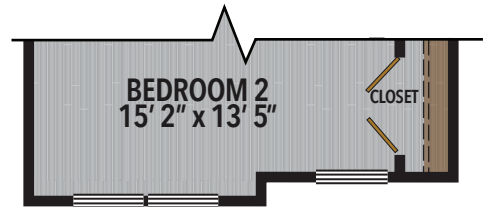
3B & 3B1 - FLOOR 2



3C - FLOOR 2



3B & 3B1 - FLOOR 2



3C - FLOOR 2

3 BEDROOM TOWNHOMES (3B, 3B1, & 3C)  
 3B & 3B1 - APPROX. 1,630 s.f. / 3C - 1,770 s.f.